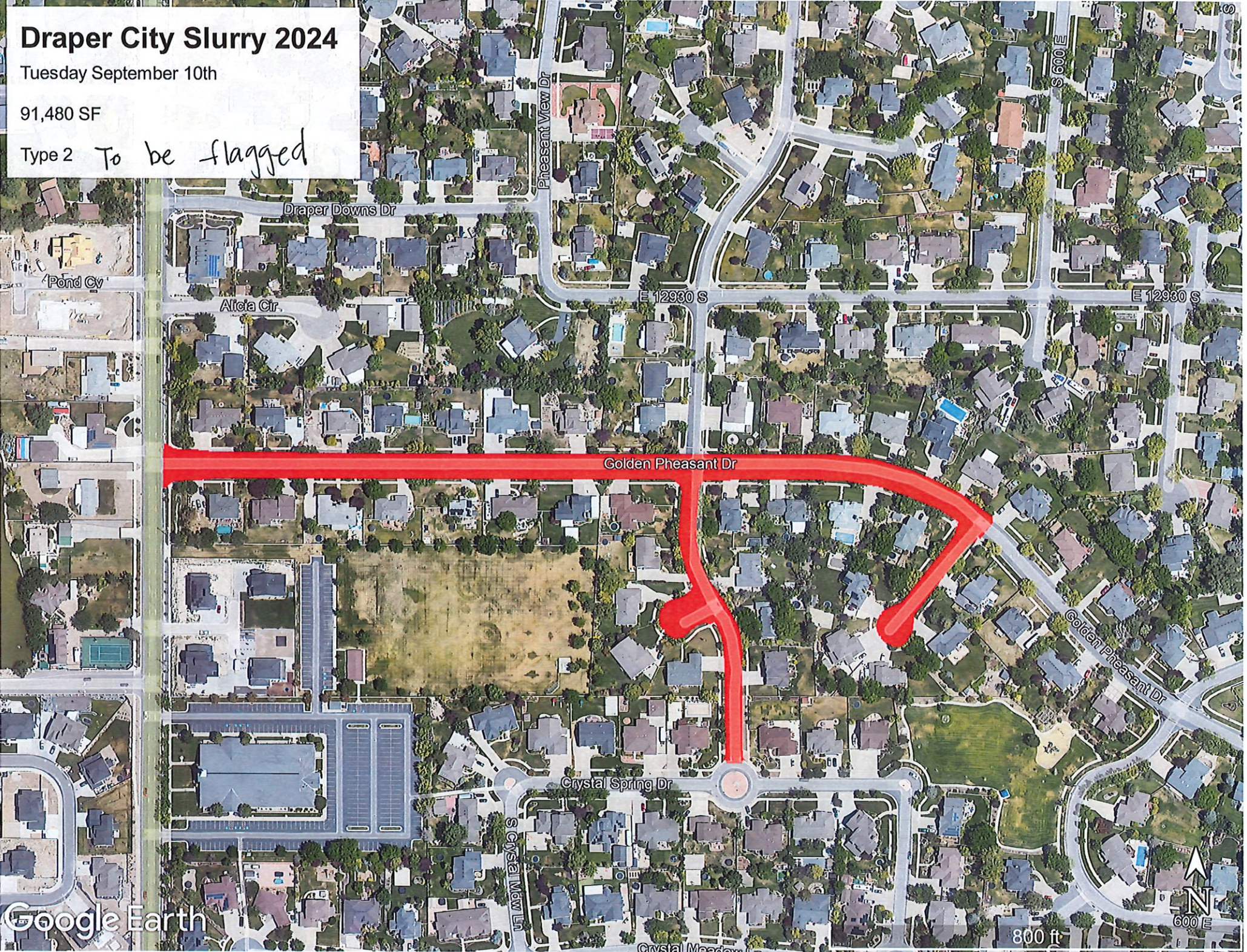


Draper City Slurry 2024

Tuesday September 10th

91,480 SF

Type 2 To be flagged

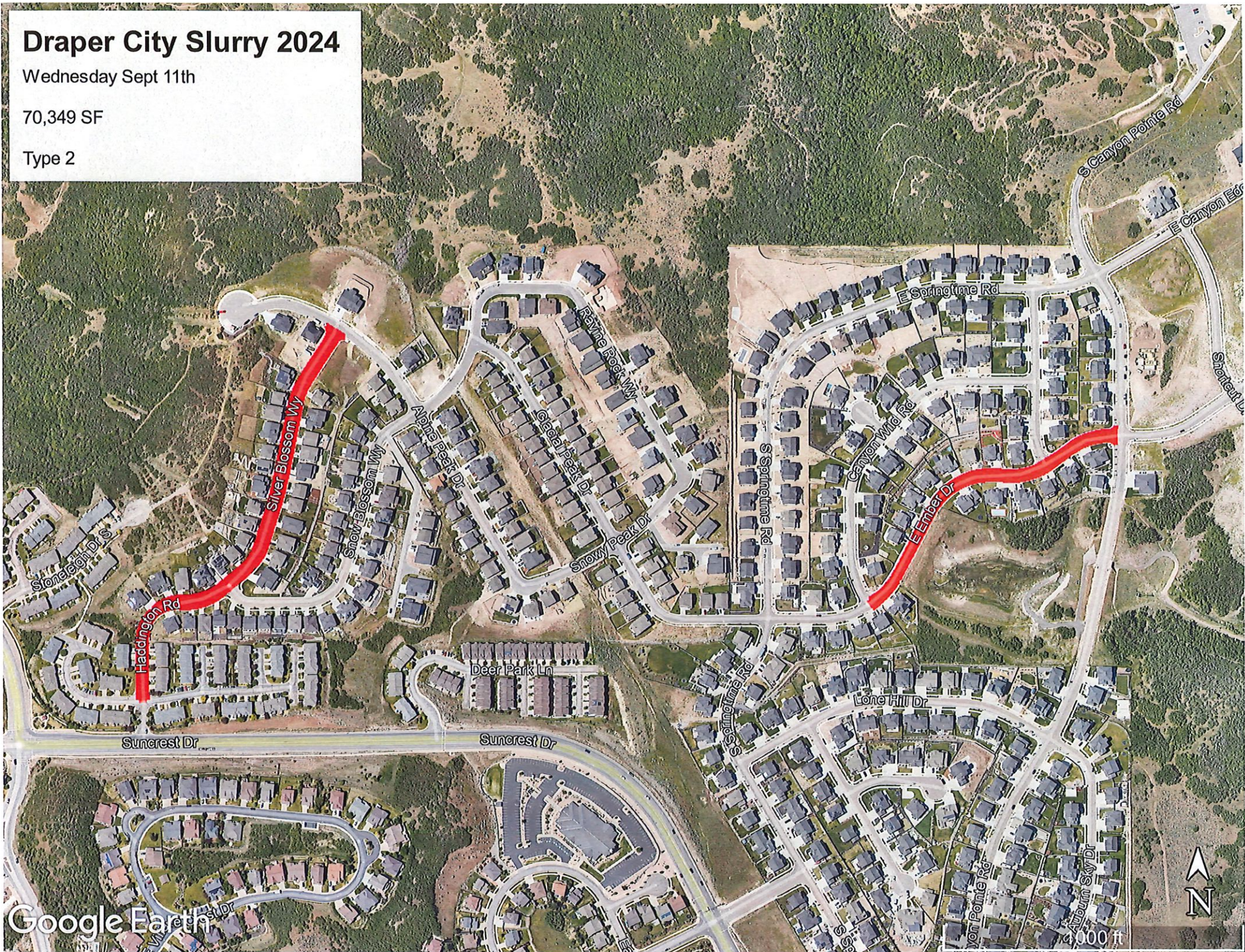


Draper City Slurry 2024

Wednesday Sept 11th

70,349 SF

Type 2



500 ft

Draper City Slurry 2024

Wednesday Sept 11th

12,532 SF

Type 2



Google Earth

500 ft

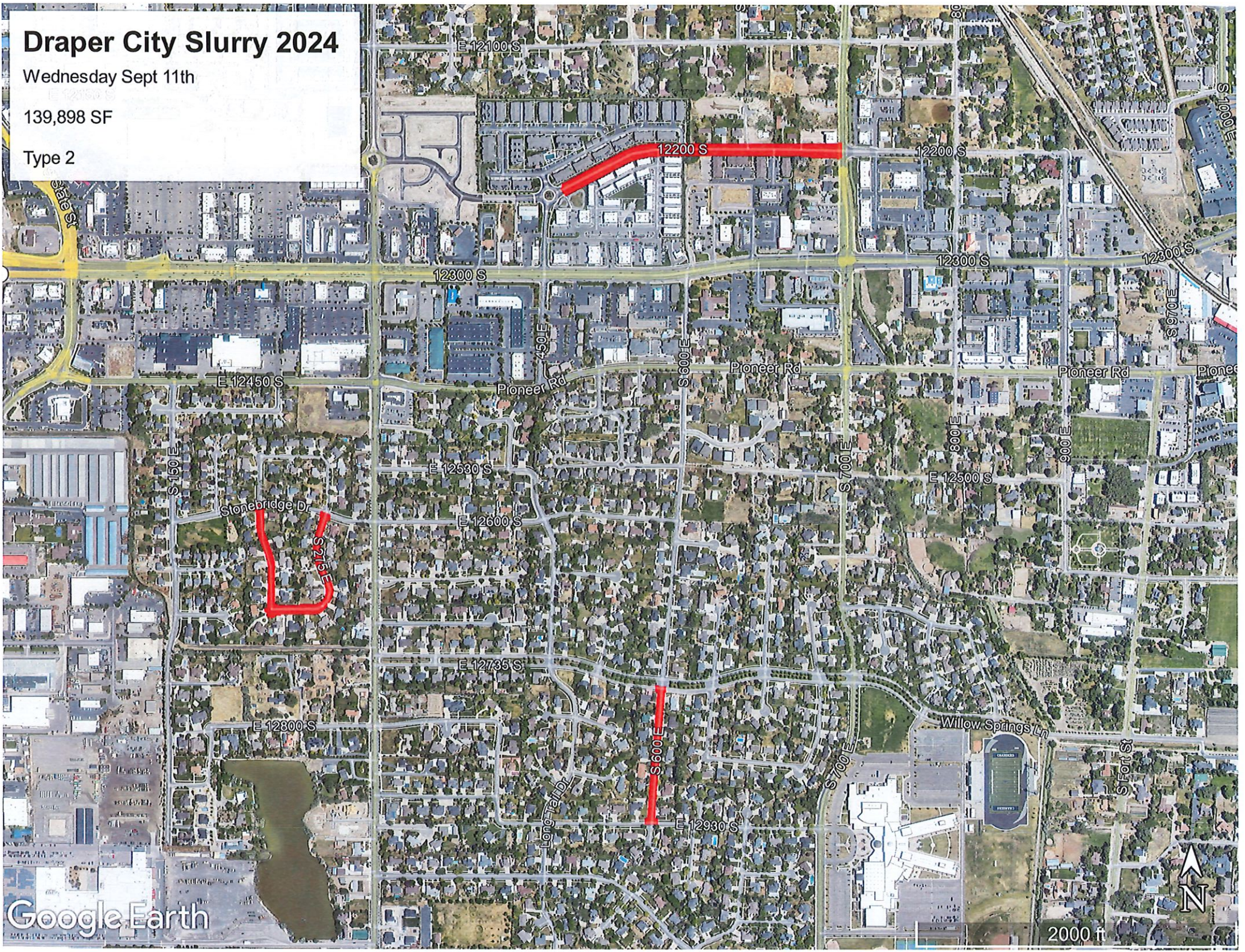


Draper City Slurry 2024

Wednesday Sept 11th

139,898 SF

Type 2



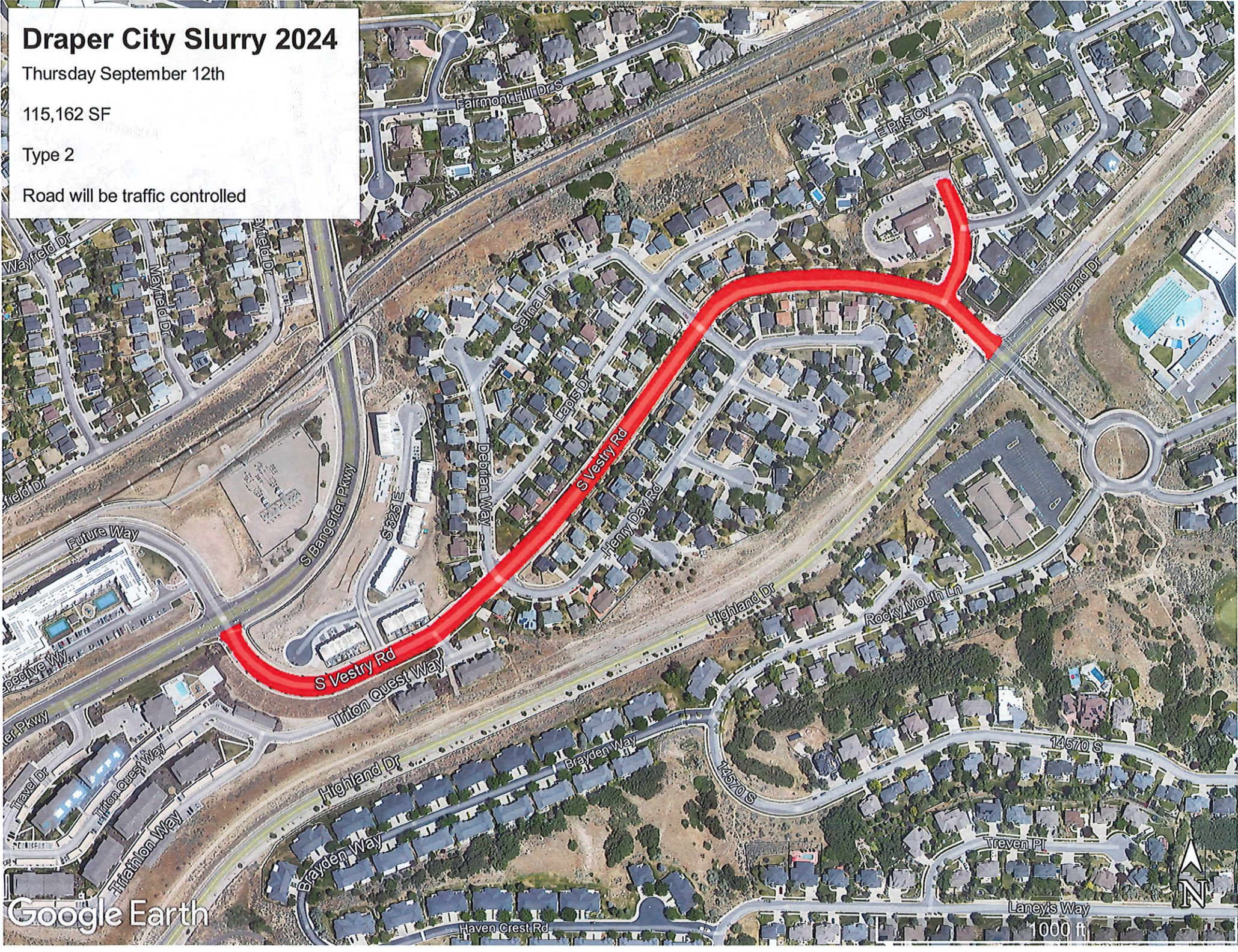
Draper City Slurry 2024

Thursday September 12th

115,162 SF

Type 2

Road will be traffic controlled



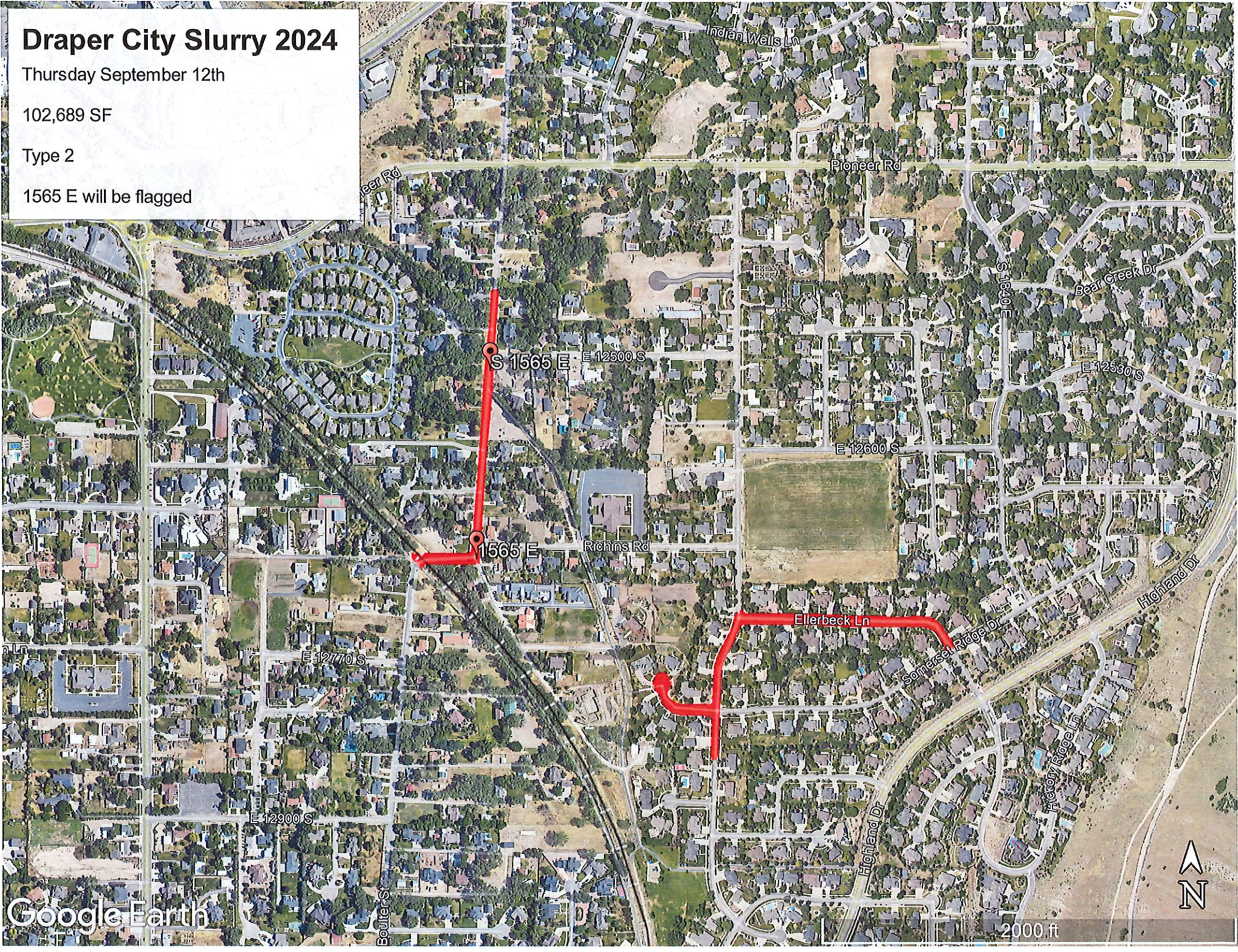
Draper City Slurry 2024

Thursday September 12th

102,689 SF

Type 2

1565 E will be flagged



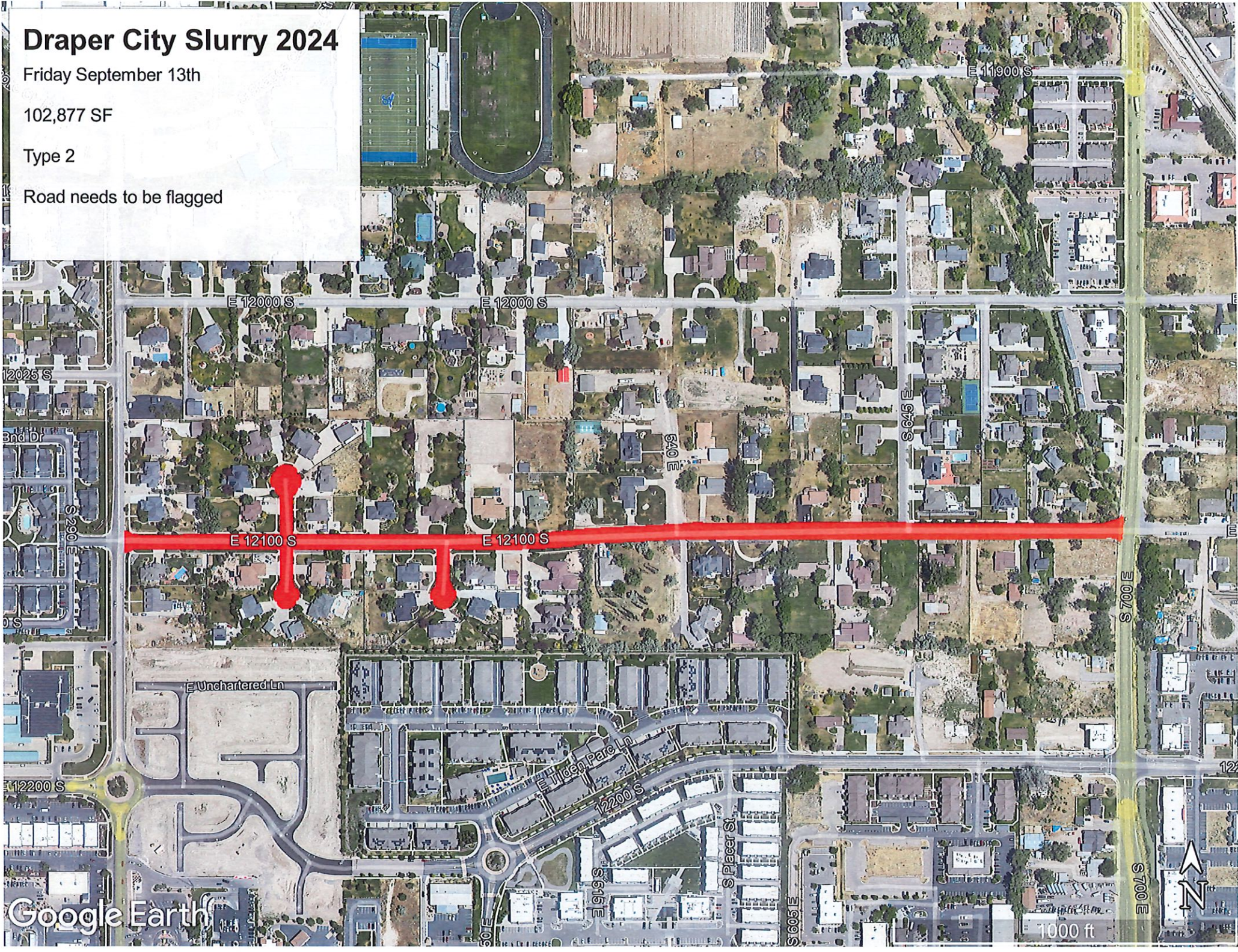
Draper City Slurry 2024

Friday September 13th

102,877 SF

Type 2

Road needs to be flagged



Draper City Slurry 2024

Friday September 13th

31,570 SF

Type 2

S 1565 E

E 12500 S

12410 S

E 12600 S

Google Earth

NW Draper Canal Trail



500 ft

Draper City Slurry 2024

Friday September 13th

77,880 SF

Type 2

road to be flagged

