



UTILITY PROJECT NOTICE

As a reminder, the South Valley Sewer District will be rehabilitating various sewer pipelines and manholes throughout the valley starting this spring.

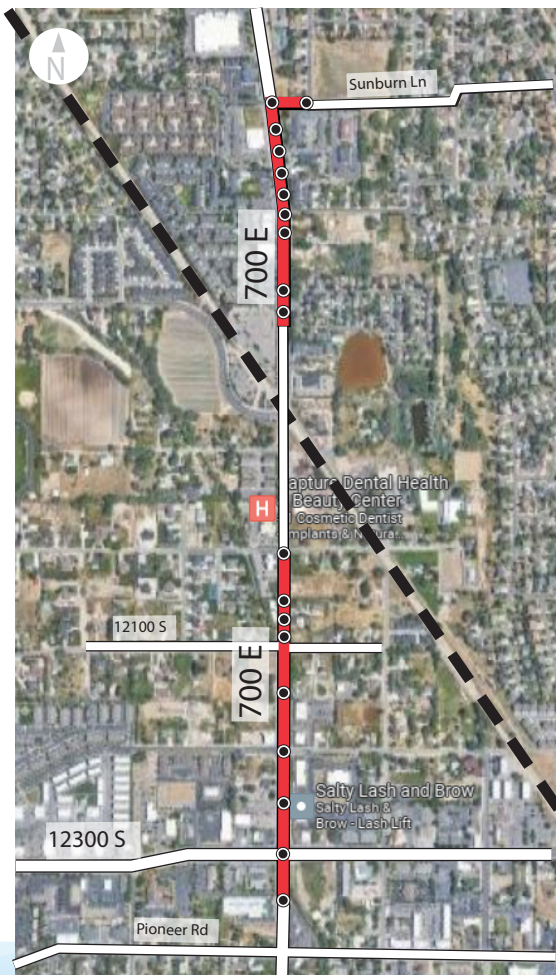
BACKGROUND & NEED

As early as **May 6, 2024**, the South Valley Sewer District will begin repairing various segments of the aging sewer infrastructure in Riverton, Bluffdale, South Jordan, and Draper.

The District has found that these sewer pipes are in poor condition, and proactive measures are being taken to prevent additional deterioration and operational impacts.

Fortunately, this project is able to use newer technology to install a liner inside the existing pipe. This installation will take place while the old sewer line is still in service, which will minimize the impact to the public. Liner installation and re-establishing customer service connections may require some minimal excavation work.

PROJECT MAP



CONSTRUCTION

The project includes cleaning of the sewer to remove sediment and debris before rehabilitation, and installation of a temporary bypass pipeline that will ensure service is maintained during construction.

Since this project will use trenchless technology, impacts will be much less than with a traditional open-trench project. However, impacts may include increased noise and odors, and could temporarily affect roadway access and traffic. The project team will work closely with the rehabilitation contractor to minimize inconvenience to the public as much as possible.

In most cases, the contractor will be able to complete sewer lining and restoration within a 21-day period.

ROAD CLOSURES & DETOURS

Construction crews will be working around the existing sewer manholes. Disruption will be minimized as much as possible, but because the sewer will be accessed via manholes, restrictions will occur adjacent to the contractor's work area.

Business and residential accesses will remain open. Motor traffic can expect lane shifts and lane closures around the immediate work area. Minimal traffic delays are expected.

Residents and businesses should avoid parking vehicles near the workzones while rehabilitation activities are occurring on the street. This will protect personal property, minimize impact to the area, and expedite work.

EASEMENTS

The sewer lines are built within the District's easements. **The project team will contact residents and businesses directly if additional access is needed.**

FREQUENTLY ASKED QUESTIONS (FAQ's)

Q: Will my sewer service be interrupted?

A: Residents and businesses will be notified in advance if there is a need for any service interruptions. Service interruptions are brief, but may be required to re-establish connection of your service line to the main sewer line. If this is necessary, you will be notified once service has been restored.

Q: Will I notice any difference in sewer service after the rehabilitation project?

A: No. Rehabilitating the sewer line now will ensure that it performs as intended in the future. The project will extend the service life of the sewer and enhance public safety.

Q: I have a disability and require special access. Will access to my house or business be blocked?

A: If this is the case, temporary access will be provided and permanent access will be restored as quickly as possible. Please inform us if you have concerns and we will take every effort to ensure you have unimpeded access.

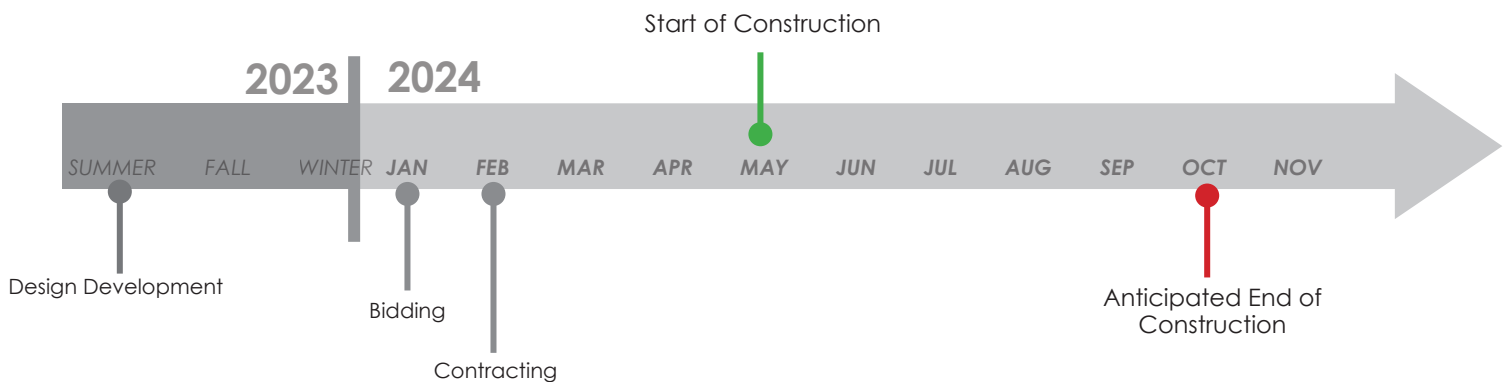
Q: What impacts can I expect?

A: Construction activities may have local impacts to traffic with lane shifts and lane closures. Construction access to each manhole will be necessary to properly install pipe and manhole liners. During pipe cleaning and lining, homes and businesses adjacent to the rehabilitation activities should anticipate construction noise and odors from the pipe-curing process. The contractor must comply with Salt Lake County noise ordinances and will work to minimize odors.

Q: Does the contractor need to enter my home or business to reconnect the service connection?

A: The contractor will not enter your home or business unless it is absolutely necessary. To reconnect each service line, the contractor will use special equipment to make each connection from inside the newly-lined pipe. Any excavation to re-establish a service connection would be adjacent to the sewer pipe.

PROJECT TIMELINE



QUESTIONS OR CONCERNS?

Reach out to project representatives using the contact information below!



Email: mikayla.scoresby@consoreng.com | Phone: 385-557-2585